

The Messenger



September 2021

Tomas Griebing, President (tlginkc@yahoo.com)
Michael Miklovic, 1st Vice President (stumper1972@aol.com)
Rodger McReynolds, 2nd Vice President (rodger_mcreynolds.hotmail.com)
Armen Hovsepian, Treasurer (info@armenstamp.com)
Michael Keil, Secretary (mkeil87859@hotmail.com)
Jim McKinzie, Newsletter Editor (jimmckinzie1@att.net)

In Person or by Zoom
New Location
Johnson County Library
22435 W 66th St.
Shawnee, KS 66226
Saturday, September 4
Gather at 1:00pm
Meeting starts at 2:00pm
**Zoom link Info will
come to your email**

Our Secretary Reports What You Missed:

Members present or on Zoom: 24 with 4 members on Zoom.

Treasurer: No report. Armin did bring up the need for a larger meeting place than what the current library offers. It seems that several members are in agreement. If someone knows of a better location, please contact Michael so he can check it out.

Membership: We have one new member, Joe Moore. Welcome!

Secretary: First-class postage is going up to .58 on August 29. USPS has announced that delivery times will change from the current 2-3 day target to 5-7 days for 61% of first-class mail beginning October 1. Congratulations to Bob Baltzell for the publication of his article "An Exhibit Is Born From A Story" in the latest issue of *The Philatelic Exhibitor*.

Librarian: No one is using the library.

Historian: Nothing to report.

First Vice-President's Report: The Waldo Library remains unavailable. The September and October meetings will be at the current location. Because the October meeting includes our annual luncheon the meeting will be from 12 until 5.

Second Vice-President's Report: Nothing to report.

Newsletter: Nothing to report.

Old business: Money for the luncheon (\$10 each) was collected today or can be turned in to Armin at the September meeting. Entry forms for December exhibits are available. So far only 3 members have committed to participating.

New Business: None.

Show-and-Tell: Roger had a magnification camera made by the Hayer Company that is useful for closeup work. Armin shared France-Hong Kong, China joint issue, with the emphasis on the *Hong Kong, China* country name. Mike had some covers and photos related to the attack on Pearl Harbor—this year will mark the 80th anniversary of the event.

Announcements:

Wichita Show—Aug. 14-15; Omaha—Sept. 12-13.

Gladstone—Has been cancelled

E&D Auction is tomorrow (Aug.8)

Program: How to use a blacklight to identify tagged stamps. Several different units were on display and demonstrated.

Respectfully submitted,
Michael Keil

**Meet in person or log into Zoom on
Saturday, September 4th and
Armen Hovsepian will be presenting ????**
**He will present two titles for the program at the end.
Should be interesting, don't miss it!**

New U.S. Issues for 2021:

Happy Birthday

First Class, Forever Rate
One Design, Pane of 20
Issue Date September 9th
Print Quantity –50,000,000
stamps



Message Monsters

First Class, Forever Rate
Four Designs, Pane of 20
Issue Date September 24th
Print Quantity –18,000,000



First Day Ceremony will be held in Topeka, KS at 11:00am CST. Redbud Park, 924 N Kansas Ave, Topeka, KS 66608

Day of the Dead

First Class, Forever Rate
Four Designs, Pane of 20
Issue Date September 30th
Print Quantity –???? stamps



Interesting group for the first stamps issued at the new 58c forever rate. The Happy Birthday will be the most popular and is a great design. Not sure about the rest. What are your thoughts? Write me and we will include comments about these designs in the next newsletter. Only two more announced for the rest of the year, coming in October.

Philatelic Happenings:

Not so far to go to a show!

Omaha Stamp Show

Saturday & Sunday,
September 11th & 12th
Westside Community Conference Center
3534 S 107th St
Omaha, NE 68144
Hours are not listed on their website



The full pane of Message Monsters
With labels in margins
How popular will this be?



Teaser for next month!

The Midwest Philatelic Society Website, Marketplace & Blog is
www.midwestphilatelicsociety.com
Find previous newsletters, links to other stamp info and more on our website.

The President's Corner:

Well the Great American Stamp Show, co-hosted by the American Philatelic Society, the American Topical Association, and the American First Day Cover Society, was held last weekend in the Chicago area. Several of us went and had a great time. We particularly enjoyed the road trip with friends! I know we all found a couple new items for our collections. Maybe even something for a future exhibit! Here's hoping for more successful stamp shows on upcoming calendars! Tomas

NOTICE: MEETING IN-PERSON IS BACK!!!

The **SEPTEMBER** meeting for MPS will be held on **Saturday**, September 4th at 2 pm. We will be meeting **IN-PERSON** and also via **ZOOM** (if you prefer to attend online). A link will be sent through your email.

The **NEW LOCATION IS:**

**Johnson County Library-Monticello Branch
22435 W 66th Street
Shawnee, KS 66226**

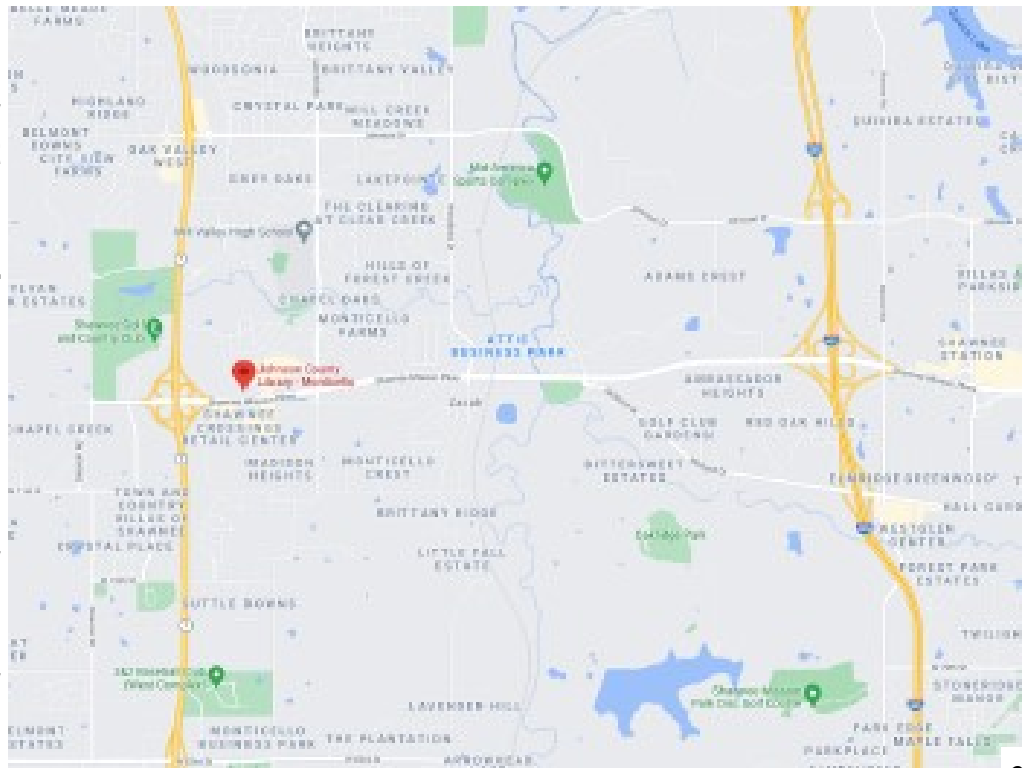
This library is located on the North side of Shawnee Mission Parkway, just East of K-7 highway (and West of I-435).

There is ample parking around the building.

We have the meeting room from 1-5pm. Please feel free to come after 1pm to help set up, visit with each other, set up auction items if you have them and enjoy being together in-person again.

We will work to maintain social distancing during the meeting.

Thanks last month for those that stayed around and helped to reset the room for the library after the auction. Please volunteer again.



Philatelic Ramblings:

Well, we made it to Chicago. The big show. The Great American Stamp Show known as GASS. It was a lot of fun and they seemed to have good attendance by both the dealers and buyers. I certainly had no trouble parting with my money. Wasn't sure I was going to make it. Had not felt well before we left but I got tested, negative again. Good! But being drugged up on sinus medication may not be the wisest thing with a check book and cash in hand at the big APS show. I bought a birthday present for myself that week. A US #1, mint, original gum. Wow and four margins, certed also! I felt like it was a great deal and I never thought I would acquire this, in this condition. What did you find at the show that got you excited? Share with the group by writing something up and sending it to me.



**US #1
Benjamin Franklin**



**US #1823
Emily Bissell, Originator
and first designer of the
Christmas Seals for the
American
Lung Association**

Because I really felt worse after coming back from Chicago, I haven't done much with my other purchases. Projects for another time. By the way, for those of you that were concerned, I tested again after I got back and yup, negative again. I feel for those of you that have a constant smoker's hack. The looks you get now are not nice. I attended some really great seminars but a couple I had to leave, not because they weren't interesting but because I could not stop coughing. Better to leave. Perhaps a new semi-postal should be created to raise money for the lung association to research the long term affects of this virus on our lungs. They could use the first Christmas seal design by Emily Bissell. It is a good simple design.

We had a good group in Chicago from MPS. I didn't take as many pictures around the show as I had planned but we did get a group picture thanks to Dale's son who also was working hard at the StampSmith booth.

Continued on pg. 5



**First Christmas Seal to
help start and fund the
American
Lung Association
1907**



Midwest Philatelic Society members at the Great American Stamp Show in Chicago—August 13, 2021

Continued from pg 4

I will cut this short. A rebuttal to last month's *Philatelic Ramblings* has been submitted. I leave you with the rebuttal and a reminder that if you submitted something for the newsletter and it has not appeared on these pages, never fear, it will be used in the future.

JMc

To the Editor –

Dear Sir:

I read with great interest the article entitled 'Philatelic Ramblings' from 'JMc' in last month's MPS newsletter. The opinions expressed compel me to reply. The author described his plans to attend the Great American Stamp Show in Chicago, but he complained about the selection of stamps the USPS chose to feature for their First Day of Issue Ceremony. Our opinions certainly differ on this point. The event was actually one of the highlights of the show for me. It was very well attended, and many people expressed their support and admiration of the chosen themes. I am a member of *Sports Philatelists International (SPI)* and our club was quite supportive, and even created a special cachet cover linking the recent summer Olympics in Tokyo with this set of stamps. The official show covers and cancels were also quite nice.

In his article, JMc was quite critical of the stamp designs for the USPS 'Backyard Games' series. For this I take great umbrage. He felt the games selected were not interesting. Really? I remember many a pleasant afternoon of my childhood playing with the flying discs, bean bags, horse shoes and balls featured on the stamps. Simple activities that captured our imaginations as children and now extend into common recreational activities for people of all ages and skill levels. A less frenetic time

before

the onslaught of video and electronic gaming.



He also complained about the images on the stamps, stating that they, '....look like something a beginning art student drew on a computer.' Original illustrations were by Mick Wiggins, and art design by Greg Breeding, both experienced artists and graphic designers with USPS. The central artwork was specifically designed to feature the pieces of equipment at the heart of each game. The graphic design is simple and clear and emphasizes whimsy and a childlike sense of play. The chosen color palate is

purposefully muted to evoke images of vintage travel posters. It distills the entire sport into a single, elegant symbol that is easily recognizable. In addition, as noted in the official statement from the USPS, these activities encourage friends, families and neighbors to gather and enjoy the outdoors. The wistful images trigger a sense of nostalgia for backyard BBQs, trips to the beach, and weekend gatherings at local parks.

And what about the sports activities themselves? Badminton is boring? Really? Maybe in his childhood backyard. However, this sport ranges from a casual pastime to highly competitive international caliber. The Badminton World Federation, the international governing body for the sport, was organized in 1934 and now has 194 nation members. The sport officially entered the Olympic program at the Barcelona games in 1992, although had been featured as a demonstration sport in Munich in 1972 and Seoul in 1988. Serving speeds for the shuttlecock often exceed 200 mph. And doubles badminton? Oh my stars! One of the fastest moving sports on the entire Olympic program. Athletes from China, South Korea, and Indonesia have dominated Olympic badminton, but Denmark and Malaysia have also had a very strong presence in the sport.

Continued on pg. 6

Continued from pg. 5

Need we be reminded that one of the most venerated sporting venues on the planet, home to the Queen of the four international Grand Slam tennis tournaments – Wimbledon – is formally known as the 'All England Lawn Tennis and CROQUET Club'?



And that little flying disc? Invented by Walter Frederick 'Fred' Morrison in 1948 and ultimately patented ten years later by the Wham-O company, this little circular piece of plastic earned millions of dollars and found millions of dedicated enthusiasts. Enough said.

As one of the speakers noted during the official dedication ceremony, these types of games, 'Form a beloved part of the fabric of American life.' Stamp issues now come in all

shapes and sizes. Long gone are the days of only showing busts of Washington or Franklin or US flags flapping in the breeze. There is a wide and highly diverse variety among modern commemorative issuances. Enjoy and collect whatever appeals to you. Happy stamping!

Sincerely, TLG

Well, the first day covers are nice!

JMc

MPS Member Dale Smith Receives Award at GASS :

Dale Smith received the American Topical Association's highest award at the Great American Stamp Show. He is the honoree as the Distinguished Topical Philatelist for 2021. The award was given Saturday night at the Celebration Banquet. This award is presented each year to an individual who has provided outstanding service to philately, and especially topical philately. We are lucky to have such a person in our local organization. Congrats, Dale!



Dale speaking after receiving award with current ATA President, Dawn R. Hamman

Japan's 150th Anniversary of Postal Services Postmarks by Jeff Lough

Japan's Philately Week started as "Stamp Collection Week in 1941. It began as an effort to publicize Japanese landmarks and scenery. It was also designed to promote stamp collecting. Japan's Philately Week is held to include the anniversary of the introduction of Japanese postal services on April 25th. These postmarks were used at the same time that a sheet of eight commemorative stamps were issue in 2021 during this week.



Barbara Crompton has a few Words about Club Exhibiting and The October Luncheon:

The entry form for our 2021 Club Exhibiting is now available on the MPS website. Barbara Crompton has already passed out copies to those who have already expressed an interest in entering a nine page frame. Please note that the contents of the entry form references the Waldo Library. Covid-19 is challenging us this year too. At this time we are unable to state definitely that MPS will be able to meet at that site in December. An alternate site is the Johnson Country Library in Shawnee where we have been meeting or the decision might need to be made to do exhibiting remotely. If the last option is chosen the exhibits will need to be scanned into a PDF file. Bob Burney will assist us with that. In any event, stay tuned and let's have an awesome 2021 Club Exhibiting.



Before you know it the October MPS Luncheon will be here. The library in Shawnee is okay with us having food (as long as the main desk can have a bite). It is \$10 for the meal, payable at the meeting. The treasury will cover the difference. Voting took place at the August meeting for the meat selections. The most popular will be ordered from KC Joe's Bar-B-Que along with two salads, rolls, and baked beans. We ask that you bring your own beverage, preferably in a screw-top container. Cookies will be provided for dessert.

If you were unable to attend the August meeting payment may be made to Armen in September. Barbara is going rock collecting. Voting will have closed effective the August meeting. **BRING YOUR MONEY THIS MONTH** if you plan to attend the luncheon.

The \$1.00 Woodrow Wilson print from the U.S. 1938 Presidential Definitive Issues by Bob Burney

Original article by Jeff Shapiro, [Presidential Series \(1938\) | National Postal Museum](#)
Additional text by Bob Burney, adding varieties, and distinguishing wet from dry prints.

Rotary Press Printing, Unwatermarked, Perforated 11x10½

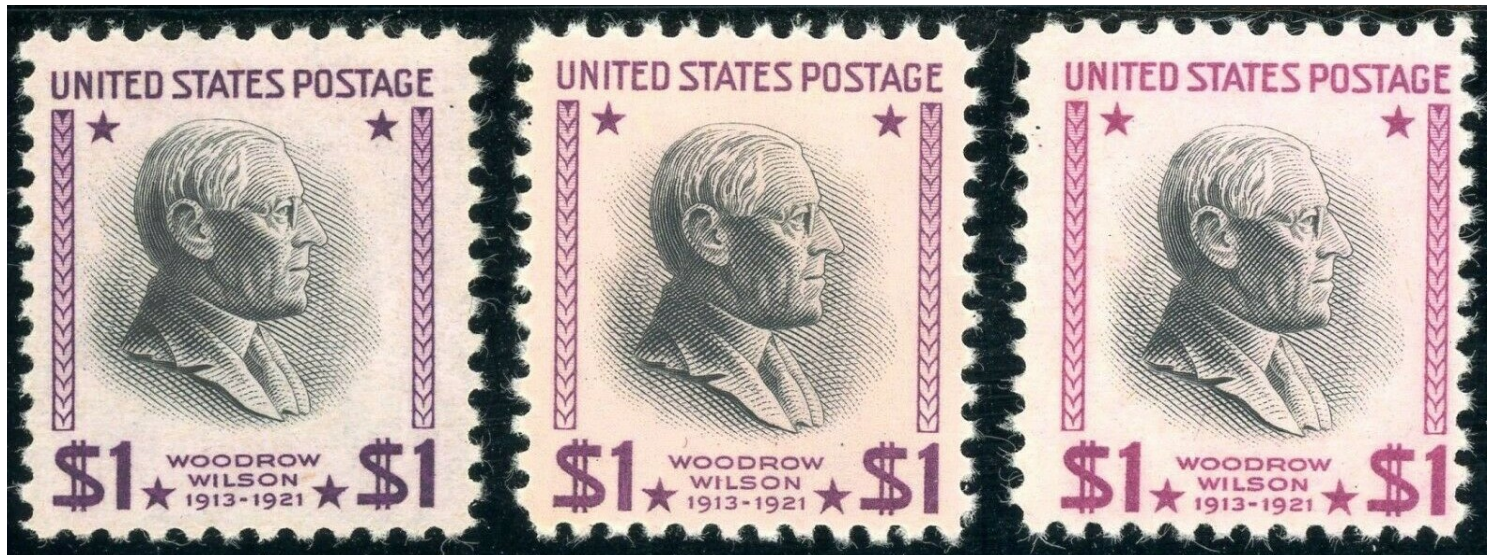
The image of Woodrow Wilson (1856-1924), the twenty-eighth president of the United States, appears on the 1-dollar issue of the 1938 Presidential Series. Wilson's likeness was taken from a medal struck by the U.S. Mint.

Woodrow Wilson, a former president of Princeton University and governor of New Jersey, led the United States through World War I and earned the reputation as a peacemaker. He was the first American president to win the Nobel Peace Prize (1920).

Elaine Rawlinson, the young artist who originally designed the Presidential Series, planned only for mono-colored stamps. The Post Office Department rejected that concept for the high value stamps, thinking the 1-dollar, 2-dollar, and 5-dollar stamps might be confused with the 1-cent, 2-cent, and 5-cent stamps. The 1-dollar stamp, printed in purple and black, and in red-violet and black, was issued to the public on August 29 and August 31, in sheet form. The color called out as red-violet and black exists on both the August 29 and August 31 productions, the former a "wet" print and the latter a "dry" print. There is a third color, listed as bright magenta and black, and deep bright magenta and black; the far end of the color spectrum, trending to a more pinkish shade. Finding these color varieties are not difficult.

Distinguishing dry prints from wet prints is less challenging than you might think. The definitive test for any of these stamps is to measure the paper thickness with a sufficiently accurate micrometer, since the high pressures involved in the dry-print method required a thicker, stiffer paper. Many collectors can distinguish the thicker, stiffer paper by applying what is known as the "flick test". Holding the stamp gently along the long edges between your thumb and fore-finger,

Continued on pg. 8



**Scott 832 dry, 832h wet
purple and black (dry print),
red-violet and
black (wet print)
CV \$7.00 M, 0.25 U**

**Scott 832c dry
red-violet and black (dry
print),
CV \$6.00 M, 0.25 U
1954 second reprint**

**Scott 832g
bright magenta and black,
deep bright magenta and
black
CV \$75.00 M. — U**

gently flick the stamp. The sound and feel of the resulting “snap” is sometimes enough to tell whether the stamp is on thick (stiff) or normal paper. Since most collectors do not own a paper micrometer, perhaps the safest test for flat plate stamps is to compare the design size. This can be done using a template stamp or in your photo-editor by overlapping scans of a known wet- or dry printing with the subject stamp. Wet prints tend to appear with a slight fuzziness in the design a result of the ink sinking into the moistened paper, and the ink can spread slightly (check the hair for fine or mottled strokes). The dry print eliminates the fuzziness from the design, and is a thicker, stiffer paper. Images are sharper, where the color is not as dark as the wet print, and because the ink is raised on the paper, you can sometimes feel the texture.

Check your stock of these prints carefully! There is a single-line USIR watermark variety accidentally produced in 1951 (the first reprint) that has a CV of \$200 mint never hinged, \$120 unused hinged, and \$65 used. If these postage stamps had been printed on watermark paper, the Bureau of Engraving and Printing would have supplied their USPS single-line watermark paper and not the USIR (U.S. Internal Revenue) watermark paper. Here’s your chance to own a major printing error! If you buy the watermarked print, be sure to request a certification from that philatelic resource.

Usages of the 1-dollar stamp in combination with other stamps are relatively easy to find, especially on parcels, registered letters, and heavier international airmail covers. Collectors looking for solo usages of the 1-dollar stamp will usually have to find specific multiple airmail rate covers. For example, the 1-dollar stamp would have paid two times the 50-cents per half ounce airmail rate via the Pacific to the Territory of the Philippines (in effect April 21, 1937 thru June 30, 1946), or two times the 50-cents per half ounce airmail rate to West Africa via the South Atlantic (in effect December 2, 1941 thru October 31, 1946), and four times the 25-cents per half ounce airmail rate to most of Africa, Asia, and the Pacific Islands (in effect November 1, 1946 thru June 30, 1971).

Get Ready for BOSTON:

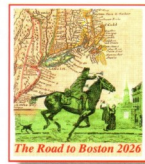
Are you ready to go to Boston to the 12th Philatelic Exposition of the United States? I am and what a kick off at GASS. I had to drag myself out of bed that first day of the show to make it over there for a great ceremony. I missed the First Day ceremony of the Backyard Games, imagine that!



BOSTON 2026 WORLD EXPO

The ceremony consisted of an introduction and remarks about the show scheduled in Boston, May 23-30, 2026. They also unveiled the first label produced for the show. Got to meet the artist, Chris Calle, behind the label and the show cachet which was fun. It is a great looking label and perfect for this upcoming show in a very historic city on the 250th Anniversary year of the signing of the Declaration of Independence. Come on USPS, time to step up. I am not sure what it is going to take to see a series of stamps for the 250th Anniversary. Like we had at the 200th from 1972 to 1984.

Chris Calle also designed the show postmark that was available at the show post office for cancellation. But I needed a stamp. I didn't want just any stamp. So what to do? I thought go to Jerry's booth, of Coins Stamps N Stuff. Surely he will have a sheet of the recently issued Mayflower issue. Looked all through the Forever sheets he had at face. Nothing, but he had some singles and sold one to me for 50¢. So after carefully thought, I stuck it on the show envelope. Took it up to the USPS workers to cancel with the show cancel. Wham!!! Down went her hand with the stamp. As I was walking away, I looked at the cover and thought, yes she was quick but it



BOSTON 2026 WORLD EXPO
 LABEL UNVEILING CEREMONY | AUGUST 12, 2021
 GREAT AMERICAN STAMP SHOW | ROSEMONT, IL



The Boston 2026 World Expo Label reproduces part of Herman Moll's 1729 Map with the earliest depiction of a Postal Road between New England and its adjacent colonies. The first segment of this route, known as the Boston Post Road, is still in use today.

BOSTON 2026 WORLD EXPO
 LABEL UNVEILING | AUG. 12, 2021 | 2 PM AT SHOW FLOOR STAGE
 DONALD E. STEPHENS CONVENTION CENTER, ROSEMONT, IL

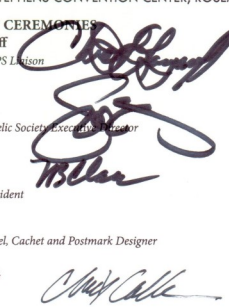
MASTER OF CEREMONIES
 Chris Lazaroff
 Boston 2026 USPS Liaison

WELCOME
 Scott English
 American Philatelic Society Executive Director

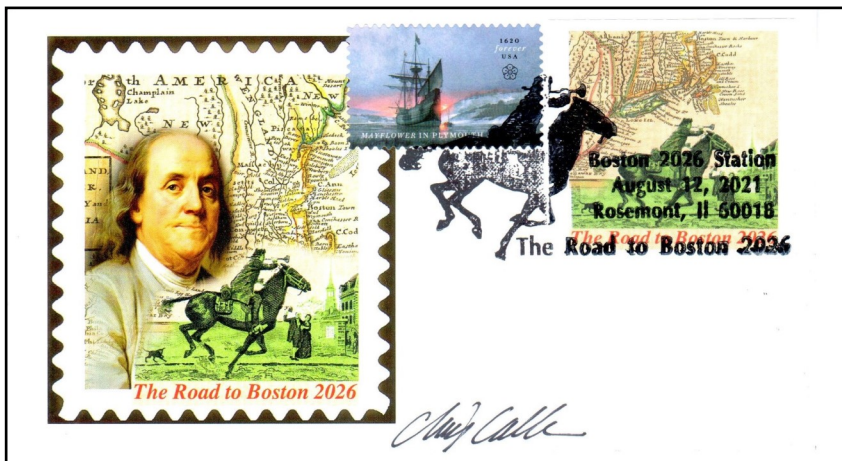
REMARKS
 Nancy Clark
 Boston 2026 President

Chris Calle
 Boston 2026 Label, Cachet and Postmark Designer

UNVEILING



looks good.



The label reproduces a portion of Herman Moll's 1729 Map with the earliest recorded depiction of a Postal Road between new England and neighboring colonies. The first segment of this route, known as the Boston Post Road, is still in use today.

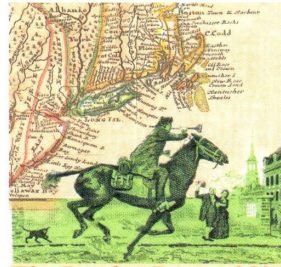
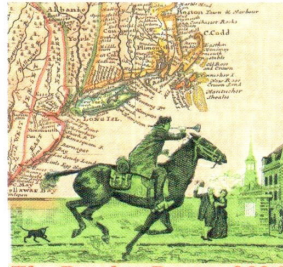
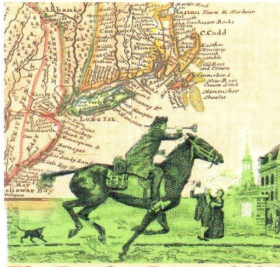
This is suppose to be the first of a series of labels being produced for the Boston Show. Can not wait for the rest.

Continued on pg. 10

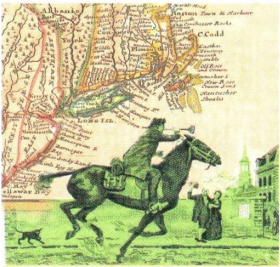
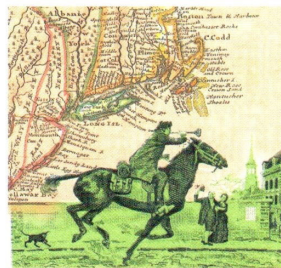
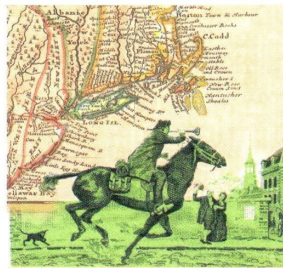
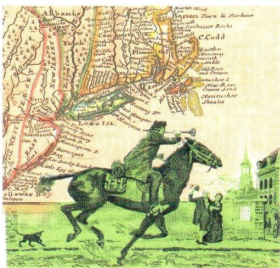
THE ROAD TO
BOSTON 2026

BOSTON 2026
WORLD EXPO

Boston Convention and
Exposition Center,
May 23-30, 2026.



Chris Calle



Show Label Design
Unveiling
Chris Lazaroff, Scott
English and Chris Calle

#1 in a series

© Boston 2026
World Stamp Show, Inc.

www.Boston2026.org

Sheet of nine labels designed by Chris Calle for
the Boston 2026 World Expo

The one take-away that both MPS member Jeff Lough and I kept hearing during and after the ceremony was, "Better make your hotel reservations early. They will fill up quick! You know Boston!!" I am already looking into it. I don't plan on missing it. Besides I plan on being retired by then.

Who else wants to go?

JMc

**NEW POSTAL RATES IN EFFECT STARTING
SUNDAY, AUGUST 29TH.
FIRST CLASS-58¢ POSTCARD RATE-40¢
CHECK USPS.COM FOR OTHER RATE CHANGES**

Hope you enjoyed this month's newsletter. Thanks to Historian Bob B. Jeff L. Tomas G. & Barbara C. for their contributions. You can contribute too by emailing me for next month's issue. **Deadline for the October issue will be September 15th.** Happy stamping! *Jim Mc*